



## 15 Devonshire Street

Dalton-In-Furness, LA15 8SW

Offers In The Region Of £100,000



2



1



1



D





# 15 Devonshire Street

Dalton-In-Furness, LA15 8SW

## Offers In The Region Of £100,000



***This well-presented two-bedroom terraced house is ideal for first-time buyers, offering a move-in ready home in a convenient location. Situated close to local amenities, shops, and transport links, the property features a bright living space, and two comfortable bedrooms. Perfect for those looking to step onto the property ladder with minimal work required.***

As you enter this property, you arrive into a vestibule that gives access to the generous sized reception room. The spacious reception room features contemporary grey carpets, creating a modern and inviting space perfect for relaxing or entertaining. The generous layout offers plenty of room for both living and dining areas. From here you can gain access to the kitchen and the stairs that lead to the first floor. The kitchen has been fitted with cream shaker style wall and base units, with complimentary oak effect laminate work surfaces, and a subway tiled splashback. The kitchen has space for free standing appliances including plumbing for a washing machine. The modern three piece ground floor shower room comprises of a walk in thermostatic shower, a vanity unit with a sink and WC, and has been decorated tastefully with grey and white speckled cladding to the walls and a grey tiled flooring.

The first floor offers two generously sized double bedrooms, both featuring soft carpeting and neutral décor throughout, providing a comfortable and versatile space ready to make your own. The first room is situated to the front aspect of the property, with the second bedroom situated to the rear, benefiting from built in storage.

The property includes a low-maintenance rear yard, ideal for outdoor seating, or enjoying some fresh air in a private setting.

### Reception

12'8" x 22'4" (3.88 x 6.81 )

### Kitchen

7'5" x 7'0" (2.28 x 2.14 )

### Shower room

6'2" x 7'5" (1.89 x 2.28 )

### Bedroom one

9'11" x 12'9" (3.03 x 3.91 )

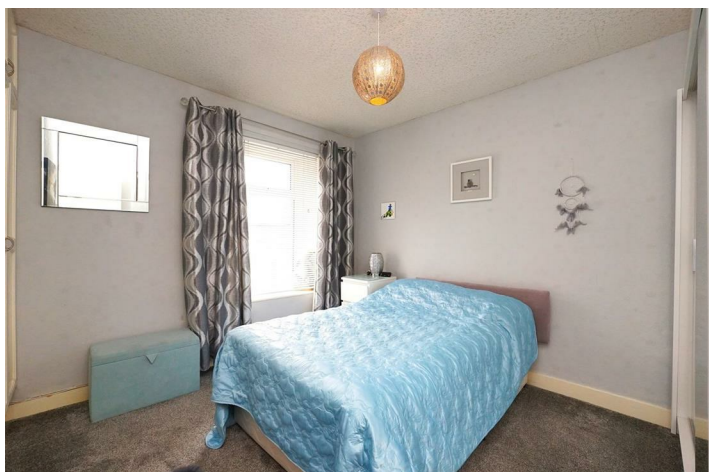
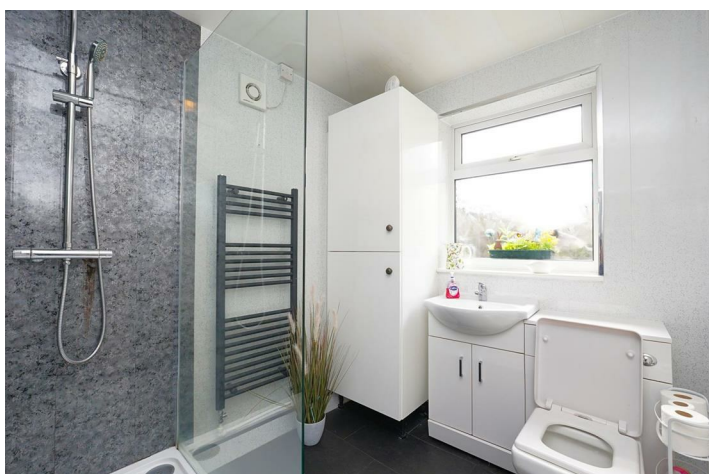
### Bedroom two

9'10" x 11'9" (3.02 x 3.60 )



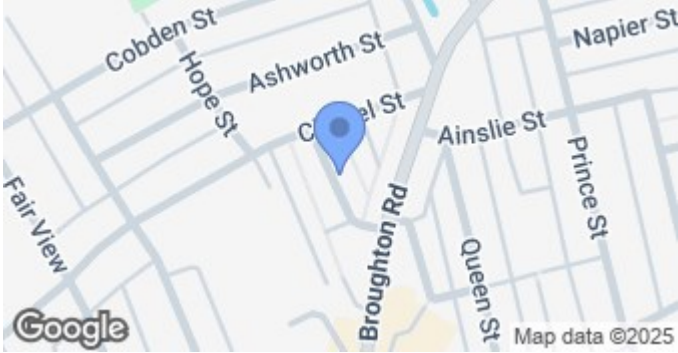
- No Onward Chain
  - Yard To Rear
- Close To Transport Links
  - Double Glazing

- Ideal For First Time Buyers
  - Ready To Move Into
  - Council Tax Band - A
  - Gas Central Heating





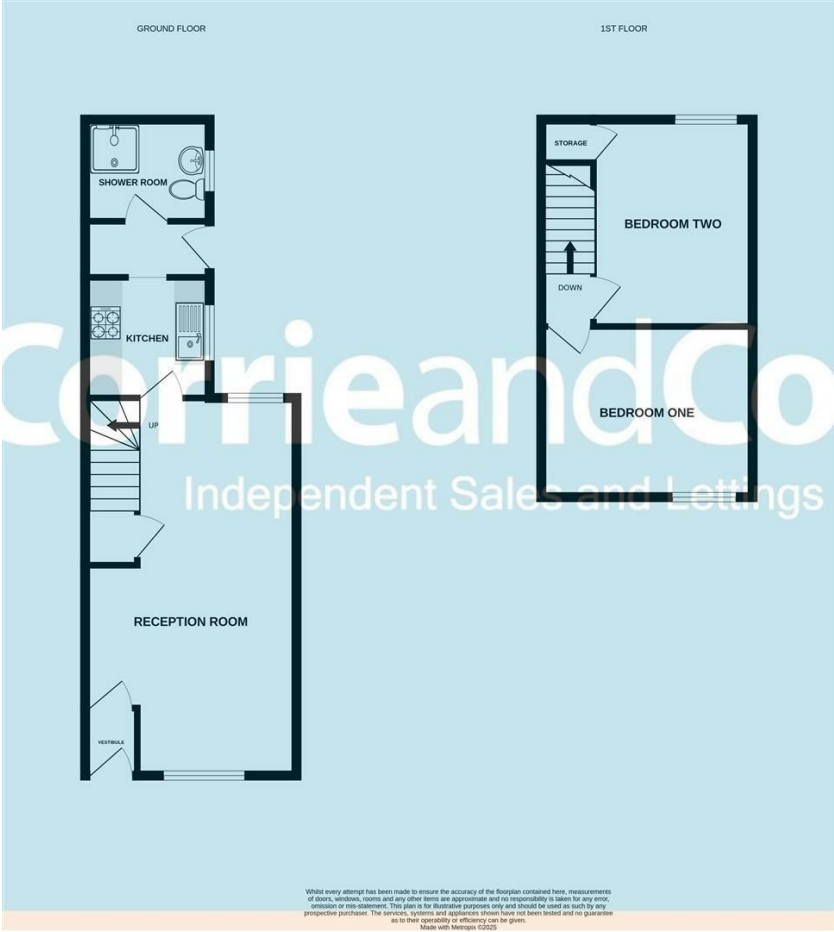
Road Map



Terrain Map



Floor Plan



Corrie and Co aim to sell your property, at the best possible price, in the shortest possible time. We have developed a clear marketing strategy, over many years, to ensure your property is exposed to all social media platforms, Rightmove, Zoopla and our own Corrie and Co website.

We also offer:

- Professional Photography
- Full promotion, throughout all our branches
- Experienced, qualified, friendly staff
- Full viewing service with feedback

To ensure your move is stress free, we can help with Mortgage advice. We work alongside local Solicitors, offering competitive conveyancing services.

We are local, family run business who are wholly independent which means we can recommend services to most suit your needs. Our aim is to provide quality advice and expertise at all times, so you can make an informed decision.

